

SWING ENCLOSURES

TRADITIONAL AND VISION COLLECTIONS



Coral[®]
INDUSTRIES

Coral Shower Enclosures

7000 Series



Standard Features

Framed

- Premium-weight traditional style door frame
- Standard elongated pull handle mounted through the side rail
- Clear vinyl drip-rail with drip collector and sweep

Optional Features Available

- 6" tubular back-to-back handle mounted through glass

Framing Options

- Notched Panel



Classic Series



Standard Features

Framed

- Heavyweight, Euro style contoured door frame
- Standard elongated pull handle mounted through the side rail
- Drip rail with drip collector and sweep

Framing Options

- Notched Panel



Traditional Collection Framed Swing Doors

Prestige Series



Standard Features

Framed

- Heavyweight, Euro style contoured door frame
- 6" tubular back-to-back handle mounted through glass
- Drip rail with drip collector and sweep

Framing Options

- Notched Panel



Common Standard Features

- Safety tempered glass
- Door can be combined with most any configuration
- Maximum single door width is 36"
- Door can be installed hinge-left or hinge-right
- Designed with a built-in open door-stop at 100°
- Continuous concealed hinge with stainless steel pins
- Full-length magnetic closure
- Clear vinyl glazing

Common Optional Features

- Steam control units
- Barrier-free design for special care units, available on select door series and configurations
- Tubular Towel Bar, Single Side
- Tubular Towel Bar, Back to Back
- 6" or 8" Tubular Towel Bar/ Handle Combo
- Black vinyl glazing

Finish Options

	Chrome	Gold	Matte Black	Brushed Nickel	Oil-Rubbed Bronze	White	Bone	Gloss Black	Aged Pewter	Wrought Iron	Aged Bronze	Champagne
7000 Series	●	●	●	●	●	●	●	●	●	●	●	●
Classic Series	●		●	●	●	●	●	●	●	●	●	●
Prestige Series	●		●	●	●	●	●	●	●	●	●	●



Glass Options

- Clear
- Aquaview
- P5
- Niagra

Note: We offer many other available glass options that can be viewed at www.coralind.com

Coral Shower Enclosures



Style Series

Standard Features

Semi-Frameless

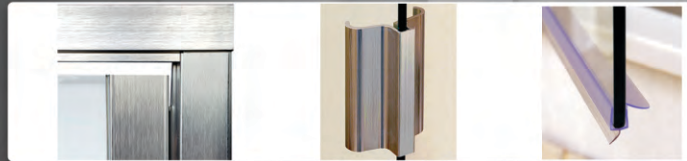
- Traditional style semi-frameless door with hinge rail
- 1/4" door glass with brilliant polished edges
- Frameless edge-mounted elongated handle with magnetic closure
- Continuous concealed hinge with stainless steel pins
- Clear vinyl drip-rail and sweep
- Designed with a built in open door stop at 100°

Framing Options

- Notched Panel (shown)
- Frameless Corner (shown)
- Frameless Strike

Series upgrade Options

- Style HGP Series (3/8" panel upgrade)



Freestyle Series

Standard Features

Semi-Frameless

- Traditional style semi-frameless door with hinge rail
- 1/4" door glass with brilliant polished edges
- 6" tubular back-to-back handle mounted through glass
- Continuous concealed hinge with stainless steel pins
- Magnetic closure
- Clear vinyl drip-rail and sweep
- Designed with a built-in open door-stop at 100°

Optional Features Available

- Double Swing Doors

Framing options

- Notched Panel (shown)
- Frameless Corner (shown)
- Frameless Strike
- Header Strike

Series Upgrade Options

- Freestyle HGP Series (3/8" panel upgrade)



Traditional Collection Semi-Frameless Swing Doors

Hyaline Series



Standard Features

- Patch hinge, semi-frameless door
- 1/4" door glass with brilliant polished edges
- Machined aluminum patch hinges mounted through the glass
- 6" tubular back-to-back handle, mounted through the glass
- Magnetic closure
- Clear vinyl drip rail and sweep

Semi-Frameless

Optional Features Available

- Double Swing Doors

Framing Options

- Notched Panel (shown)
- Frameless Corner (shown)
- Frameless Strike
- Header Strike

Series Upgrade Options

- Hyaline HGP Series (3/8" panel upgrade)



Common Standard Features

- Safety tempered glass
- Door can be combined with most any configuration
- Maximum single door width is 36"
- Door can be installed hinge-left or hinge-right
- Clear vinyl glazing

Common Optional Features

- Steam control units
- Barrier-free design for special care units, available on select door series and configurations
- Tubular Towel Bar, Single Side
- Tubular Towel Bar, Back to Back
- 6" or 8" Tubular Towel Bar/ Handle Combo
- Black vinyl glazing

Finish Options

	Chrome	Gold	Matte Black	Brushed Nickel	Oil-Rubbed Bronze	White	Bone	Gloss Black	Aged Pewter	Wrought Iron	Aged Bronze	Champagne
Style Series	●	●	●	●	●	●	●	●	●	●	●	●
Freestyle Series	●	●	●	●	●	●	●	●	●	●	●	●
Hyaline Series	●	●	●	●	●	●	●	●	●	●	●	●



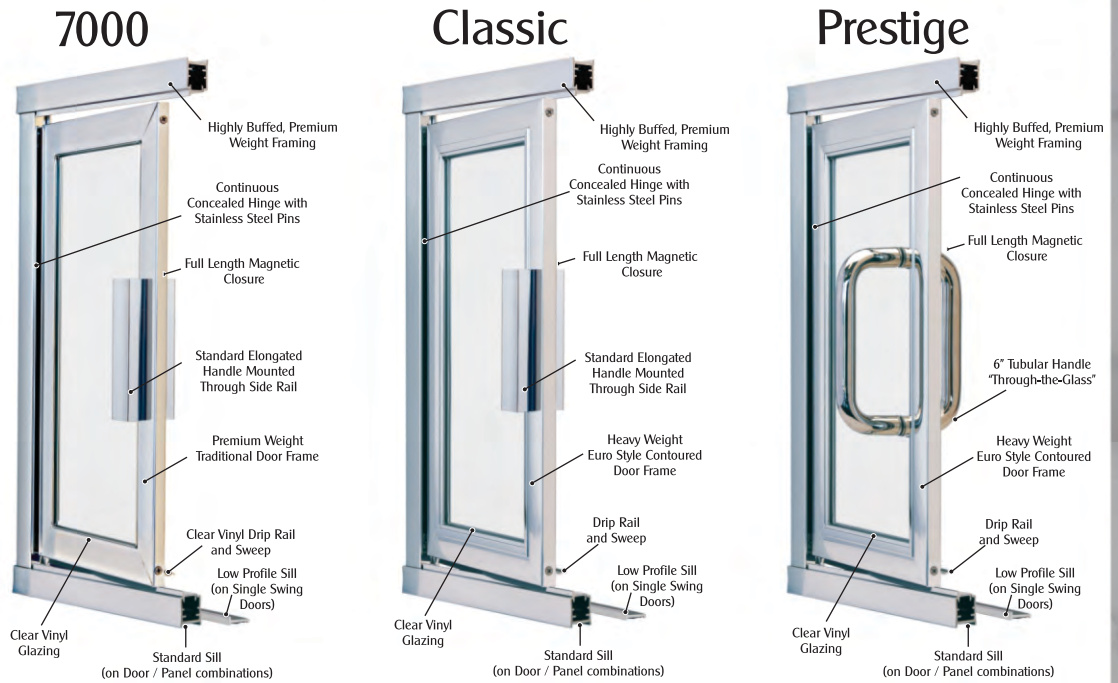
Glass Options

- Clear
- Aquaview
- P5
- Niagra

Note: We offer many other available glass options that can be viewed at www.coralind.com

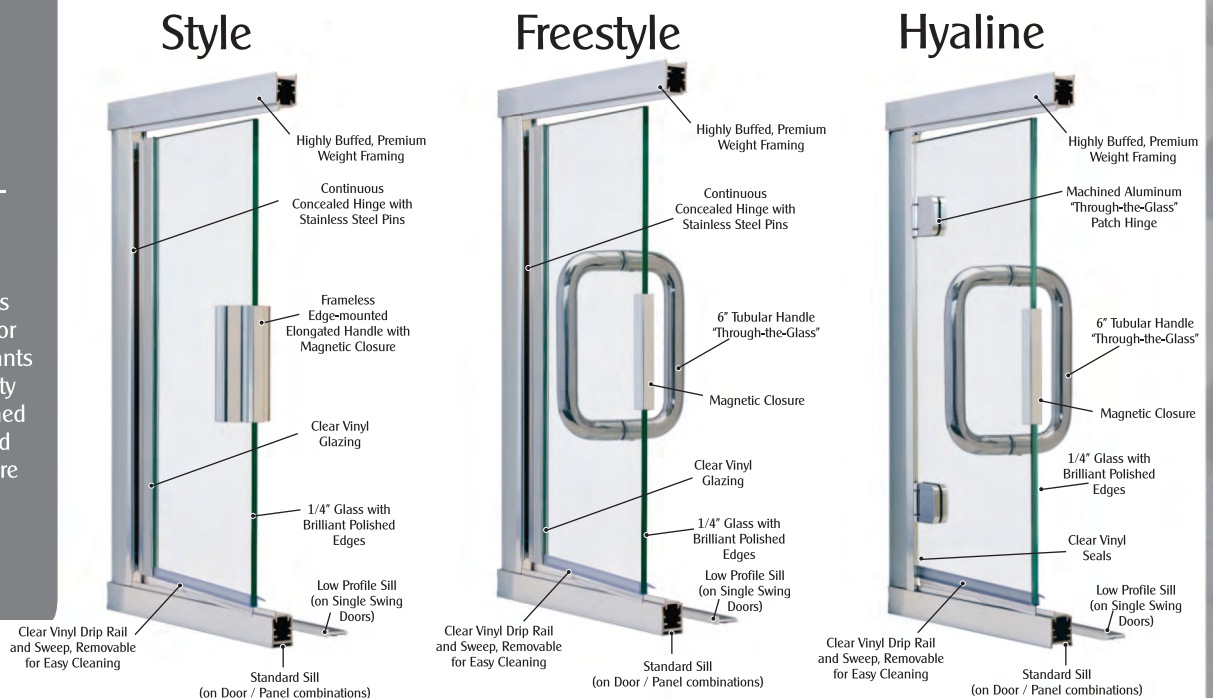
Framed Series

Our collection of framed enclosures feature door panels with aluminum framing on all sides. Framed door panels may be paired with any combination of in-line, or return angle panels, as well as full height and/or buttress panels. This combination of function and style is carefully designed to optimally fit your enclosure opening while exceeding your overall expectations.



Semi-Frameless Series

Our collection of semi-frameless enclosures feature minimal framing on the door panels. Semi-frameless is the perfect choice for the individual who wants to maximize the beauty and function of polished glass edges. Combined with exquisite hardware options, our semi-frameless enclosures provide unrivaled beauty and value.



Standard Header



781

Optional Headers

Euro Header



080

Heavy Euro Header



070

Door Rails



7000,
Style, &
Freestyle



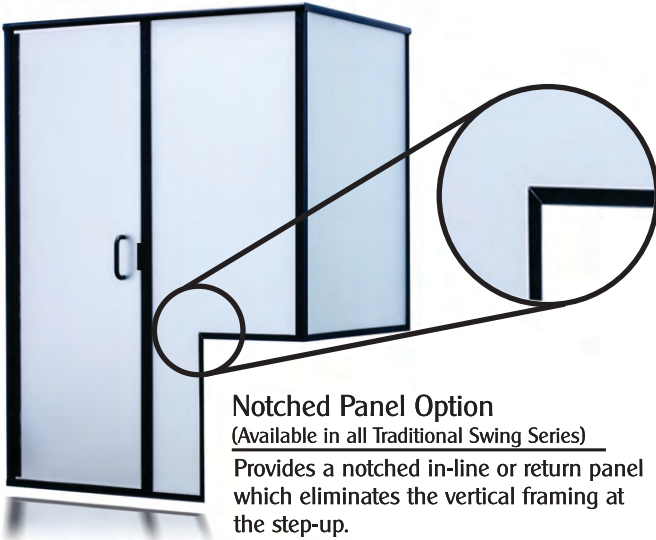
Classic &
Prestige

Hyaline Patch Hinge

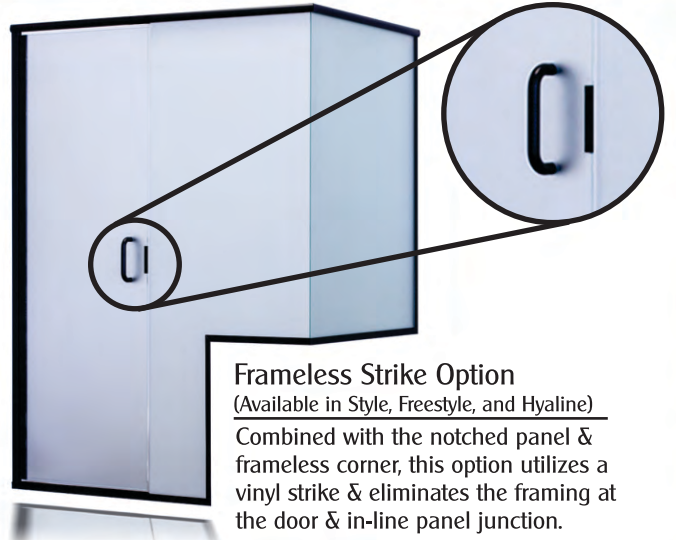


Traditional Collection

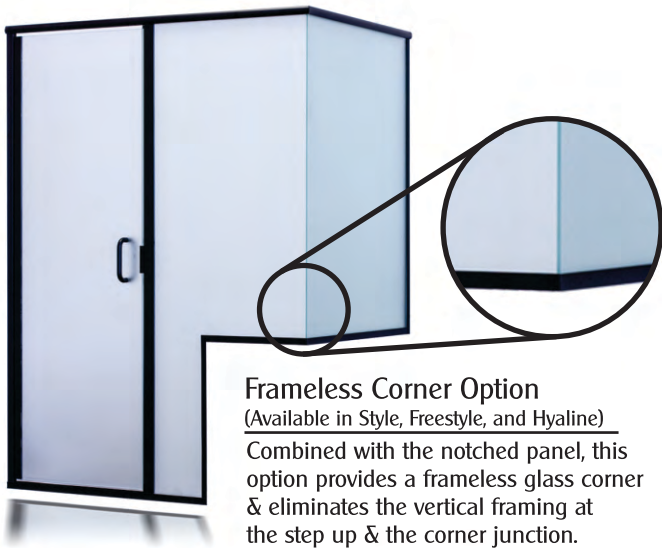
Swing Door Framing Components & Options



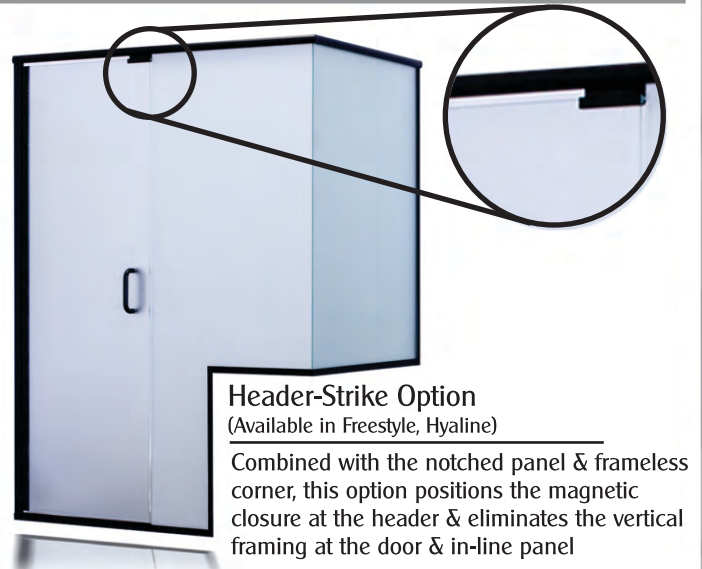
Notched Panel Option
(Available in all Traditional Swing Series)
Provides a notched in-line or return panel which eliminates the vertical framing at the step-up.



Frameless Strike Option
(Available in Style, Freestyle, and Hyaline)
Combined with the notched panel & frameless corner, this option utilizes a vinyl strike & eliminates the framing at the door & in-line panel junction.



Frameless Corner Option
(Available in Style, Freestyle, and Hyaline)
Combined with the notched panel, this option provides a frameless glass corner & eliminates the vertical framing at the step up & the corner junction.



Header-Strike Option
(Available in Freestyle, Hyaline)
Combined with the notched panel & frameless corner, this option positions the magnetic closure at the header & eliminates the vertical framing at the door & in-line panel



Introducing our new HGP Series Upgrade

HGP Series Upgrade (Heavy Glass Panel)
(Available in Style, Freestyle, and Hyaline)

- Utilizes 3/8" glass panels & 1/4" frameless door
- Eliminates the need for a header
- Incorporates the frameless strike
- Sleeve over included with angled return panels
- Door must hinge from the wall.

Coral Shower Enclosures



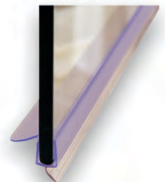
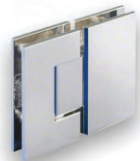
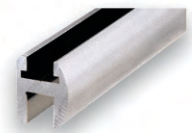
Summit Swing Series

Standard Features

- 3/8" and 1/2" glass with brilliant polished edges
- Swing hinges - Wall-mounted - Square-edge style
- Closing position - self centering
- 6" or 8" tubular back-to-back handle, mounted through glass
- Clear vinyl door sweep
- Fixed panels secured with u-channel
- 90° Fabless corner bracket

Optional Features

- Rounded beveled-edge style hinge
- Closing position - Adjustable or 5° offset
- Fixed panels secured with clamps
- Header
- Wide variety of handles & towel bars to choose from, see hardware & details on page 14
- Now introducing the Summit Series swing hinge for openings up to 39" wide.



Gallant Swing Series

Standard Features

- 3/8" and 1/2" glass with brilliant polished edges
- Header
- Swing hinges - Glass-to-glass mounted - square-edge style
- Closing position - self centering
- 6" or 8" tubular back-to-back handle, mounted through glass
- Clear vinyl door sweep
- Fixed panels secured with u-channel

Optional Features

- Rounded beveled-edge style hinge
- Closing position - Adjustable or 5° offset
- Fixed panels secured with clamps
- Wide variety of handles and towel bars to choose from, see hardware and details on page 14

Coral Shower Enclosures



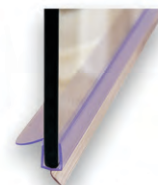
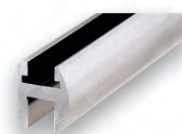
Premiere Pivot Series

Standard Features

- 3/8" and 1/2" glass with brilliant polished edges
- Wall Mount Bracket or Header
- Pivot hinges mounted on the top and bottom of the door
Rounded beveled-edge style
- Closing Position - Self Centering
- 6" or 8" tubular back-to-back handle, mounted through-glass
- Clear vinyl door sweep
- Fixed panels secured with u-channel

Optional Features

- Fixed panels secured with clamps
- Wide variety of handles and towel bars to choose from, see hardware and details on page 14





Freedom Pivot Series

Standard Features

- 3/8" and 1/2" glass with brilliant polished edges
- Wall mount bracket or header
- Pivot hinges mounted on the top and bottom of the door
 - fabless tubular style
- Closing position - Self Centering
- 6" or 8" tubular back-to-back handle, mounted through glass
- Clear vinyl door sweep
- Fixed panels secured with u-channel

Optional Features

- Fixed panels secured with clamps
- Wide variety of handles and towel bars to choose from, see hardware and details on page 14

Series comparison in the same enclosure application



Swing Hinges
Wall Mounted



Swing Hinges
Glass-to-Glass Mounted

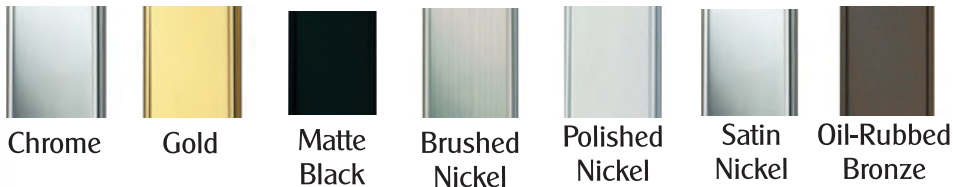
Common Standard Features

- Safety tempered glass
- Clear vinyl glazing
- Machine brass hinge systems
- Door can be combined with most any configuration

Common Optional Features

- Wide variety of handles and towel bars to choose from, see hardware and details on page 14
- Doors and Panels with custom shaped tops
- Double swing or pivot doors
- Steam control units
- Operable and fixed transoms
- Clear vinyl and polycarb seals

Finish Options Rev. 9-3-2021



See CRL (crlaurence.com) for additional finishes available

Note: Not all hardware items are available in all finishes. Check availability upon ordering.

Glass Options

Note: We offer many other available glass options that can be viewed at www.coralind.com

- Clear
- Aquaview
- P5
- Niagra
- Enduroshield glass surface treatment

Vision Collection Frameless Swing and Pivot Doors

Premiere Pivot Series



Pivot Hinges
Wall Mounted



Pivot Hinges
Header Mounted at Wall



Pivot Hinges
Header Mounted at Panel

Freedom Pivot Series



Pivot Hinges
Wall Mounted

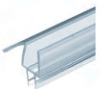


Pivot Hinges
Header Mounted at Wall

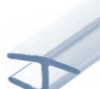


Pivot Hinges
Header Mounted at Panel

Sweeps • Seals



Clear Bottom
Sweep



In-Line Panel
Strike - Rigid



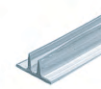
In-Line Panel
Strike - Soft



Door Seal
Soft



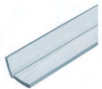
"T" Wipe
Soft



"Double Fin"
Soft



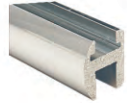
Bulb Seal
Soft



Polycarb
Angle Jamb

Coral Shower Enclosures

Headers • Sills • Channels



Swing / Pivot Header



Wall Mounting Brackets



Pivot Hinge Adapter Block



135° Header Gusset



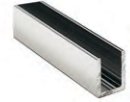
90° Header Gusset



Adjustable Gusset



Swing/Pivot Sill



U-Channel

Hinges • Clamps • Clips

Summit Swing Hinges

Standard Feature Square Style
Option - Rounded Bevel Style



Wall-Mount



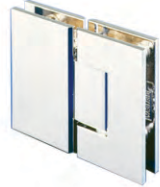
Wall-Mount



Wall-Mount with
Optional Offset Backplate

Gallant Swing Hinges

Standard Feature - Square Style
Option - Rounded Bevel Style



180° Glass-to-Glass



90° Glass-to-Glass



135° Glass-to-Glass

Premiere Pivot Hinges

Standard Feature -
Rounded Bevel Style



Top Wall-Mount



Glass-to-Glass Mount



Top Header, Ceiling, or
Bottom-Mount

Freedom Pivot Hinges

Standard Feature -
Fabless - Tubular Style



Top Wall-Mount



Top Header or Ceiling-Mount



Bottom-Mount

Clamp Styles - Fabricated Glass

Wall Mount



90° Glass-to-Glass



135° Glass-to-Glass



180° Glass-to-Glass



Standard • Round Corners - Square Edge



Optional • Round Corners - Beveled Edge



Optional • Square Corners - Square Edge



Clip Styles - Fabless

Elongated
Wall Mount
Clip



135° Sleeve-over

Square
Wall Mount
Clip



90° Sleeve-over

Right Hand Wall-mount
Sleeve-over



Left Hand Wall-mount
Sleeve-over



Adjustable
Sleeve-over

Towel Bars

Towel Bars are available in single side and back-to-back



Tubular



Tubular Back-to-Back with Escucheons



Crescent



Colonial



Victorian



Tubular with Mitered Corners



Square

Pull Handle / Towel Bar Combos



Combo

Pull Handle / Towel Bar Combos are also available in the following styles:

- Victorian • Colonial • Square
- Tubular with Mitered Corners

Push / Pull Handles



Tubular



Circular



Colonial



Square



Sculpted



Tubular with Escucheons



Crescent



Victorian



Tubular with Mitered Corners



Ladder

Knobs



Contemporary



Traditional



Ball



Cylinder



Square



Bow tie

SWING ENCLOSURES

TRADITIONAL AND VISION COLLECTIONS



02/10/20

Coral Industries • 3010 Rice Mine Road NE, Tuscaloosa, AL 35406
Phone 800.772.7737 • Fax 800.755.9427 • www.coralind.com