

ARE YOU READY FOR NEW COUNTERTOPS?

In order to improve our service level and provide our clients with the best timing to schedule their installations, please take note of the following common issues and challenges for completing installations on schedule.



 **NOT READY**

Driveway not ready



 **NOT READY**

Floors being finished with no access to work areas



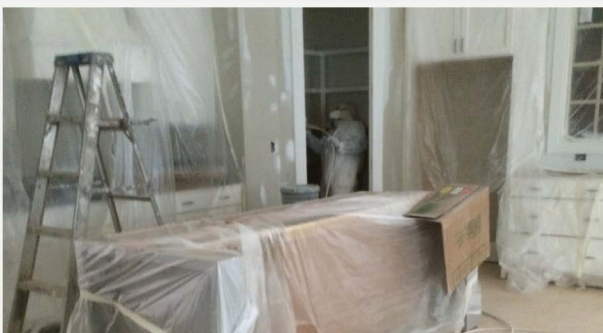
 **NOT READY**

Cabinets not complete



 **NOT READY**

Farm sink not set



 **NOT READY**

Other trades in the home impeding access to cabinets



 **NOT READY**

Drywall not complete

PREPARING FOR TEMPLATE

- ✓ Customer or builder must be onsite for decisions and approval
- ✓ Selections to include sinks, faucets, cooktop, edge, and design must be finalized
- ✓ Cabinets must be completely installed and level (including panels, doors, and end panels)
- ✓ Farm or Apron sinks must be installed and secured in final location
- ✓ Remove all items from cabinet tops and/or existing countertops prior to templating appointment
- ✓ Overhangs for island seating must be determined and discussed with your Project Manager
- ✓ Cabinets must be accessible (ie: not covered in plastic)
- ✓ All other trade work that could impede access to the cabinet area must be completed prior to templating (ie: painting, floor finishing, & plumbing)

PREPARING FOR INSTALLATION

- ✓ Plumbing, gas, and electrical disconnected prior to installation
- ✓ Sinks have been ordered and delivered to CR Home
- ✓ All items have been removed from cabinets or existing countertops
- ✓ A clear pathway has been made available free of construction items or furniture where applicable
- ✓ Driveway needs to be accessible and clear
- ✓ Sheetrock installed
- ✓ All other trade work that could impede access to the cabinet area must be completed prior to templating (ie: painting, floor finishing, & plumbing)