

HOW TO CLEAN STAINLESS STEEL

Stainless steel has some unique cleaning characteristics. In order to keep your appliance looking like new, we recommend cleaning it with one of the following options.

General Cleaning:

For regular daily maintenance: Use mild soap (dish soap) and water.

Cerama Bryte® stainless steel appliance cleaner on stainless steel exteriors or interiors. Citrushine Stainless Steel Wipes, removes fingerprints, de-greases and shines without streaking.

For heavy soils: Use a paste of baking soda and water while rubbing with a soft cloth. Do not use appliance wax, polish, bleach, steel wool, abrasives, ammonia, acids or commercial oven cleaners.

Other Cleaning Suggestions:

For appliances previously cleaned with a mineral oil-based stainless cleaner: Before using the Cerama Bryte® stainless steel appliance cleaner, wash the surface with dish soap and water to remove oily residue. Then use a generous amount of Cerama Bryte® stainless steel appliance cleaner to clean the appliance. (Future cleanings require only the normal amount of Cerama Bryte®.)

For rust, tarnish, and small blemishes: Cleaners that contain Oxalic Acid, such as Bar Keepers Friend Soft Cleanser, will remove rust, tarnish, and small blemishes. Use only the liquid cleanser (free of grit) and be sure to rub in the direction of the metal grain lines with a damp soft sponge.

For discoloration: Use a stainless steel cleaner and polish in the direction of the brush marks with a soft sponge per the User's Manual. Do not use an abrasive 'green' scrub pad, as that can scratch the surface. This should remove the discoloration. Rinse cooktop surface well with water.

If the stainless is scratched, using one of these cleaning methods can often help reduce the appearance of the scratches. For visible scratches, there is not an approved repair method to cover the scratches.

MEET OUR TERRITORY MANAGERS



MIRNA LOPEZ
Territory: Dade & S. Broward Counties
Years in Multifamily: 20
I love assisting communities in finding the perfect appliance for their needs.
MLopez@ardonline.com
786.566.1573



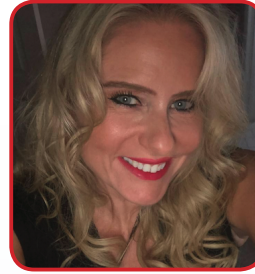
DEBORAH COLEMAN
Territory: Palm Beach, Martin, & St. Lucie Counties
Years in Multifamily: 22
I love the industry, mostly the industry professionals, who work so hard to assure that people's homes are the best they can be.
Deborah@ardonline.com
305.753.2787



PHILLIP PATTISHALL
Territory: Gainesville, Orlando, Melbourne, & Daytona
Years in Multifamily: 20+
Multi-family is always fresh, there are always new faces, new properties, and renovations.
Phillip@ardonline.com
904.509.1081



BRAD CRISTE
Territory: North Atlanta, GA
Years in Multifamily: 20
I love the people! It's a close-knit, fun industry full of great, hard-working folks!
BradC@ardonline.com
404.623.4785



AMBER BLANCO
Territory: Broward, Naples, & Ft. Myers
Years in Multifamily: 6
I love the amazing relationships I have established with these amazing properties.
Amber@ardonline.com
954.553.4181



KAREN WEAVER
Territory: Hillsborough, Pinellas, Pasco, Polk, Lake, Manatee, & Sarasota
Years in Multifamily: 22
I enjoy working with onsite staff to meet residents' needs.
Karen@ardonline.com
727.423.0278



LOREN KIVO
Territory: Jacksonville, Tallahassee, & Savannah
Years in Multifamily: 22
I love meeting new people, traveling to new places, and being someone my customers can count on.
Loren@ardonline.com
904.237.3961



GREGG TRANCE
Territory: South Atlanta & Columbia, SC
Years in Multifamily: 30+
I love meeting new people and helping update properties as well as always learning new things from my clients.
GTrance@ardonline.com
404.583.4555



TRACI JONES
Territory: Charlotte, NC & Surrounding Areas
Years in Multifamily: 30+
I love being out in the field and working with customers and looking forward to being with ARD for many years to come!
traci@ardonline.com
704.301.8813

in sink erator® **DISPOSERS ON SALE**



Model No. FWD1

- 1/3 horsepower
- Plastic grind chamber
- Galvanized steel grinding elements with stainless steel swivel lugs
- Stainless steel sink flange with positive seal and one-piece plastic stopper
- Overload protector manual reset
- Permanently lubricated upper and lower bearings
- Quick lock mounting for fast, easy installation
- Exclusive cushioned anti-splash baffle
- Dishwasher drain connection
- Does not include cord

SALE PRICE **\$59**



Model No. FWD2

- 1/3 horsepower
- Plastic grind chamber
- Galvanized steel grinding elements with stainless steel swivel lugs
- Stainless steel sink flange with positive seal and one-piece plastic stopper
- Overload protector manual reset
- Permanently lubricated upper and lower bearings
- Quick lock mounting for fast, easy installation
- Exclusive cushioned anti-splash baffle
- Dishwasher drain connection
- Does not include cord

SALE PRICE **\$70**

Six-foot Disposer Cords

with straight connector

No. ANDDP6000



ONLY \$4 EACH

FRIGIDAIRE

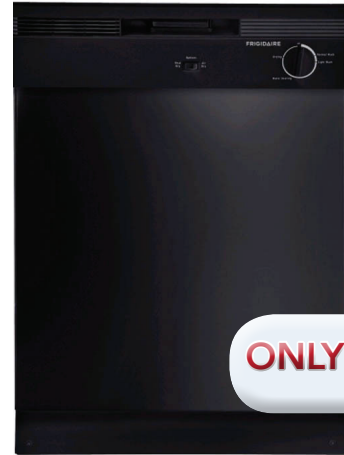
FULL KITCHEN
ONLY \$1345



ONLY \$614

18cf Top Mount Refrigerator

FFTR1814TB Black
FFTR1814TW White



ONLY \$260

24" Dishwasher

FBD2400KB Black
FBD2400KW White



ONLY \$432

30" Free-standing Range

Coil Burners • Manual Clean

FFEF3012UB Black
FFEF3012UW White



ONLY \$39

Broan 30" Range Hood

A9413023 Black
A9413001 White