

HEAT&GLO

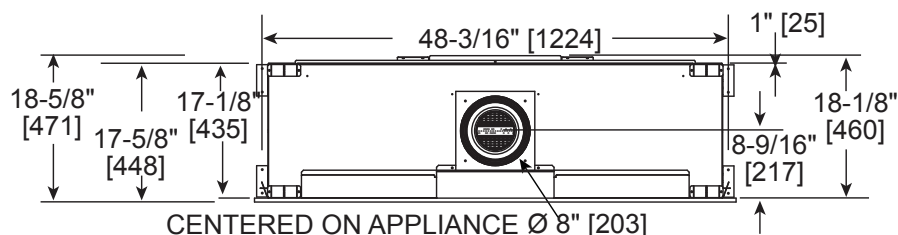
No one builds a better fire

Please consult the manufacturer's installation manual for all details and requirements before making a final design layout decision.

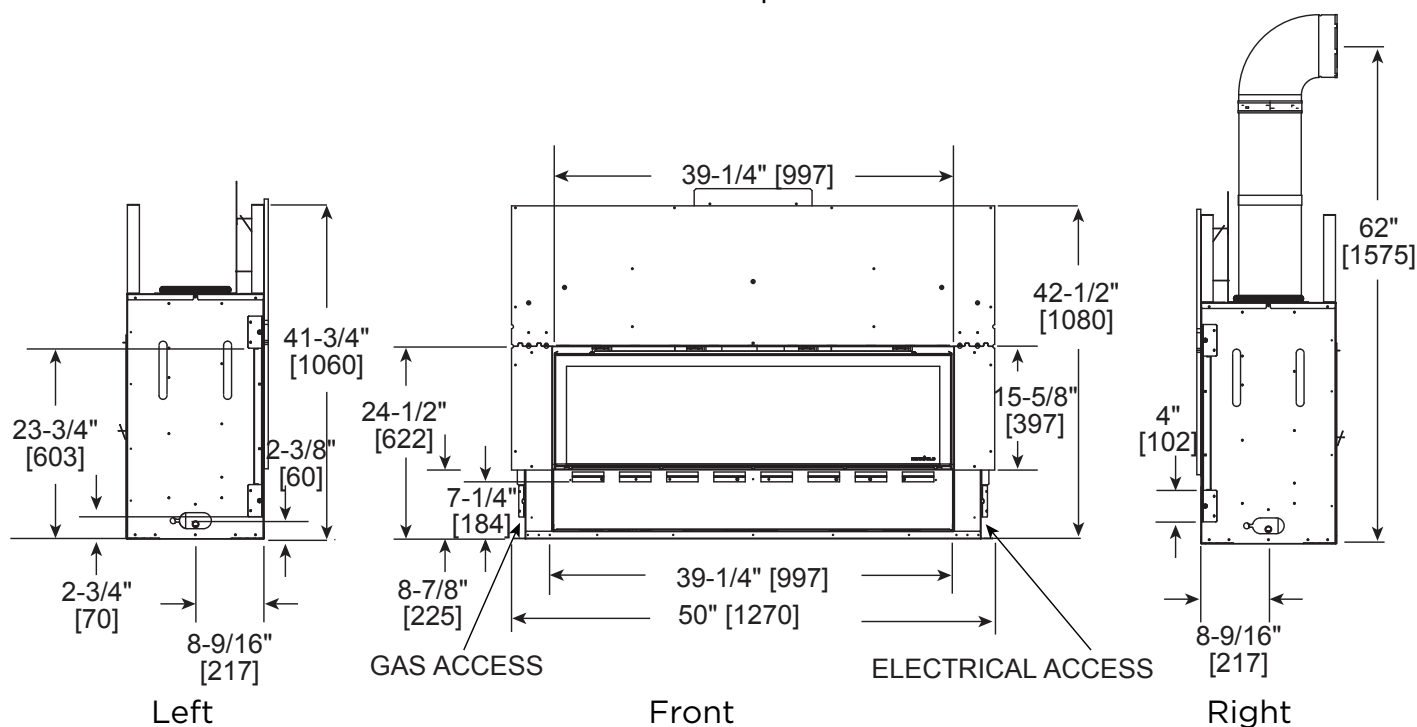
MEZZO36

Direct Vent Gas Fireplace

MODEL	FRONT WIDTH		BACK WIDTH		HEIGHT		DEPTH		GLASS SIZE
MEZZO36	Actual	Framing	Actual	Framing	Actual	Framing	Actual	Framing	35-1/2 x 12-1/2
	50	48-1/4	48-3/16	48-1/4	42-1/2	42	18-5/8	18-1/4	



Top

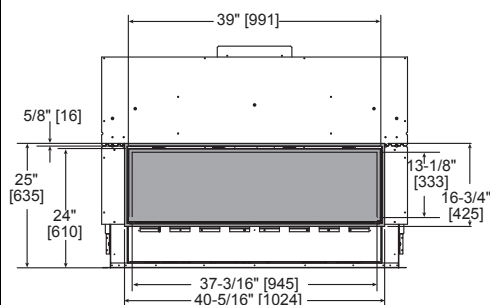


Left

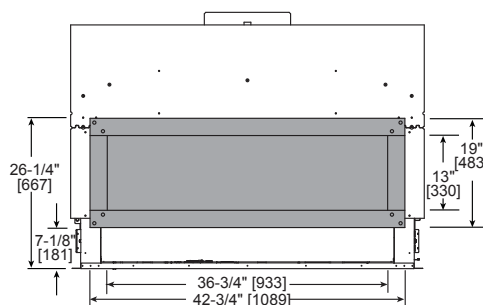
Front

Right

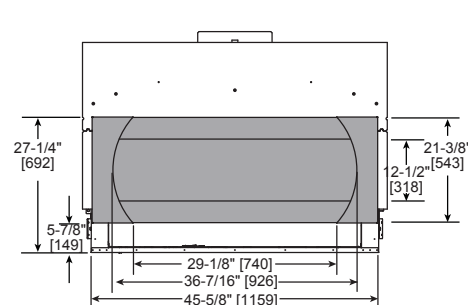
Decorative Fronts



Clean Face Trim

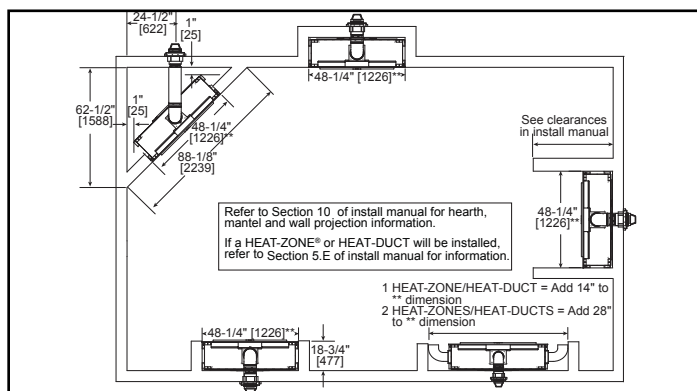


Loft Forge Front

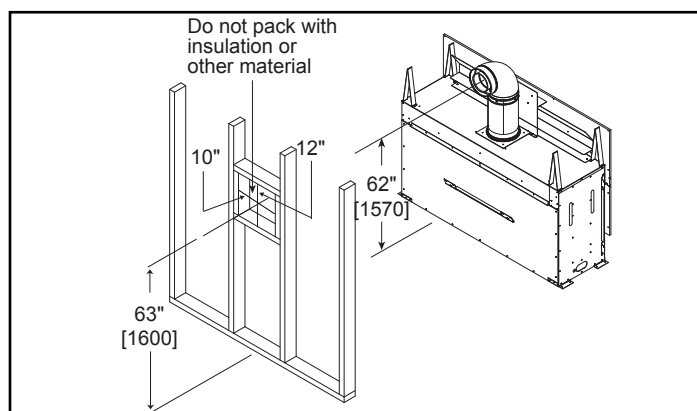


Quattro Front

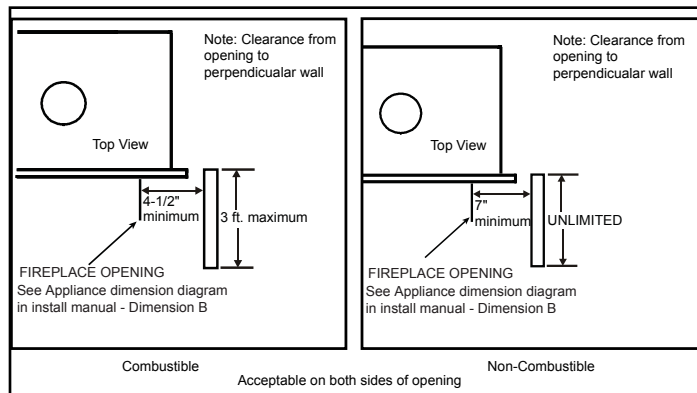
APPLIANCE LOCATION



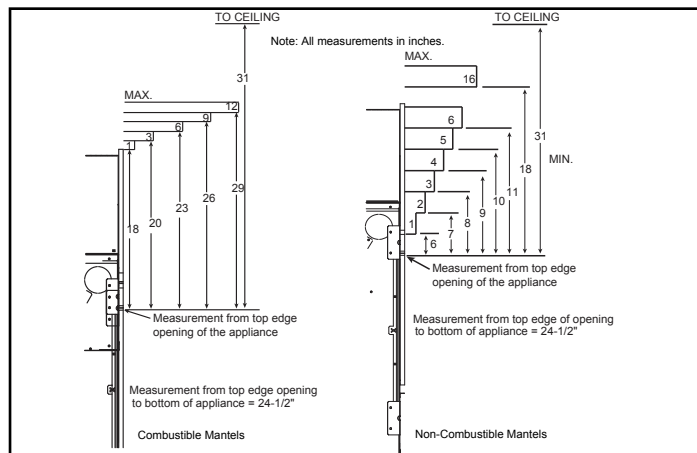
WALL PENETRATION



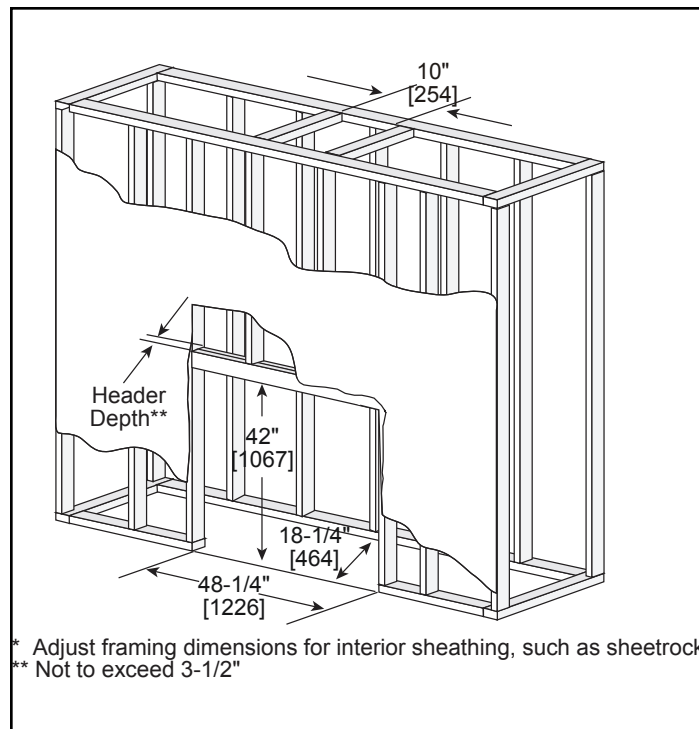
MANTEL LEG/WALL PROJECTIONS



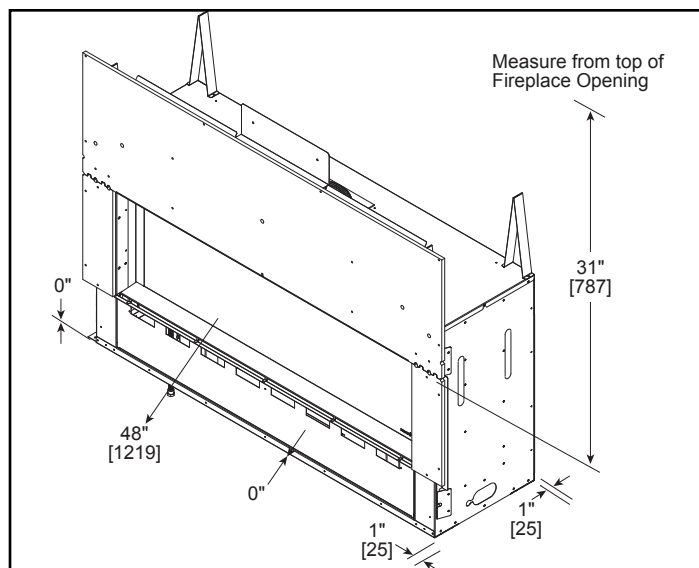
MANTEL PROJECTIONS



FRAMING DIMENSION



CLEARANCES TO COMBUSTIBLES



PRODUCT LISTING CODES

US	ANSI Z21.88-2014
CAN	CSA 2.33-2014
US LISTED	UL307B

Product information provided is not complete and is subject to change without notice. Product installation must adhere strictly to instructions accompanying product to avoid risk of fire and potential injury.

Additional information can be found online at www.heatnglo.com