

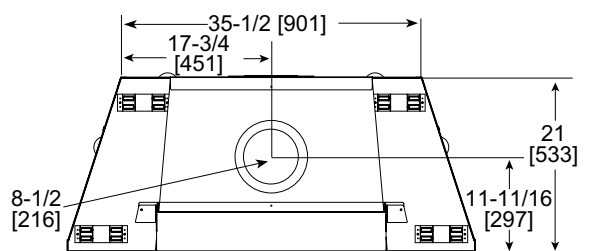
**HEAT&GLO™**

No one builds a better fire

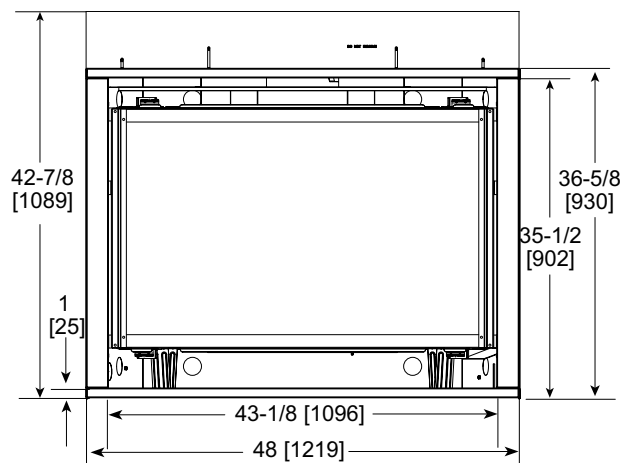
Please consult the manufacturer's installation manual for all details and requirements before making a final design layout decision.

**8000 Modern**  
Direct Vent Gas Fireplace

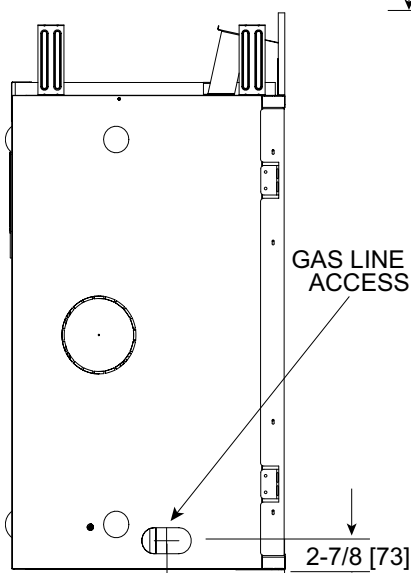
MODEL	FRONT WIDTH		BACK WIDTH		HEIGHT		DEPTH		VIEWING AREA
8000CMOD	Actual	Framing	Actual	Framing	Actual	Framing	Actual	Framing	42-1/2 x 26-3/4
	48	49	35-1/2	49	41-7/8	42-1/8	21-1/2	22	



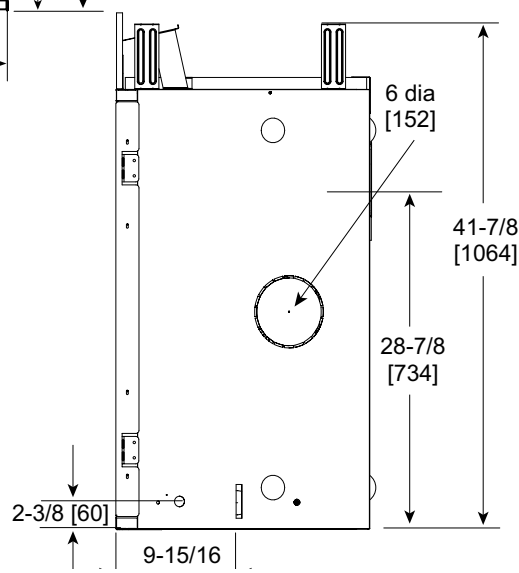
TOP VIEW



FRONT VIEW



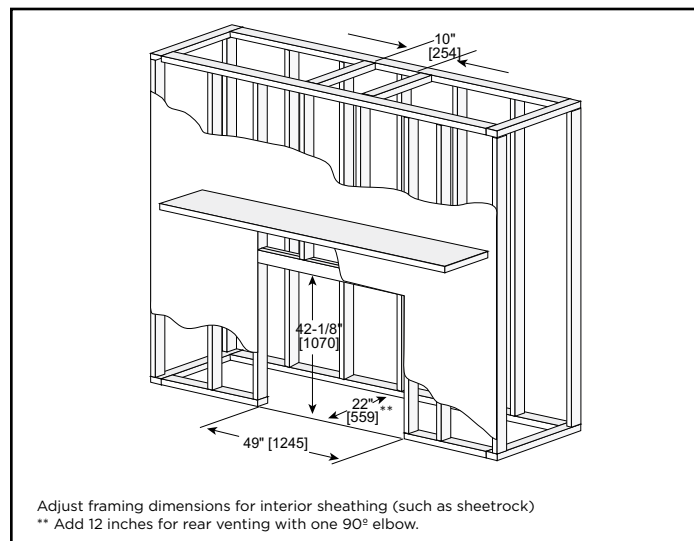
LEFT VIEW



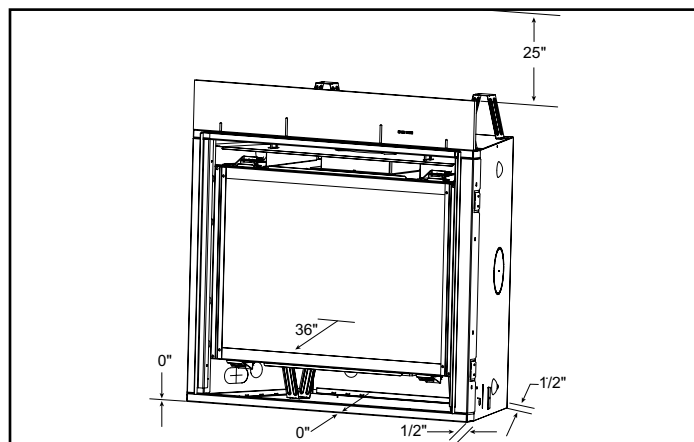
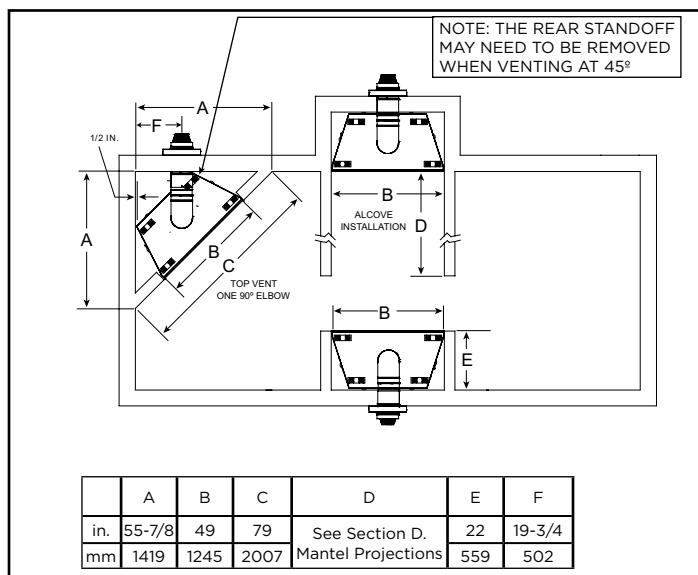
RIGHT VIEW

## FRAMING DIMENSIONS

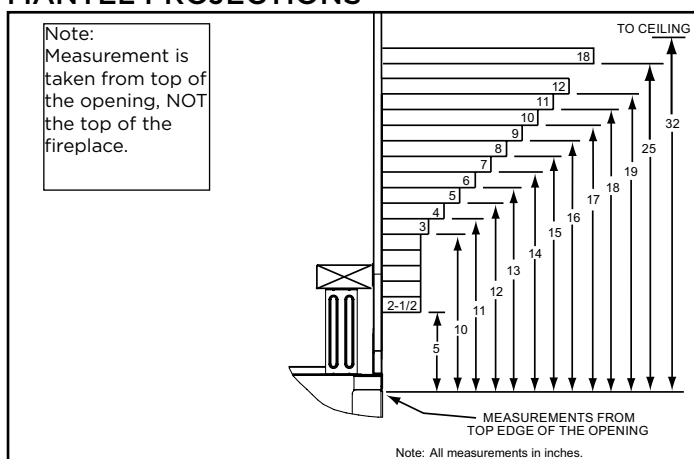
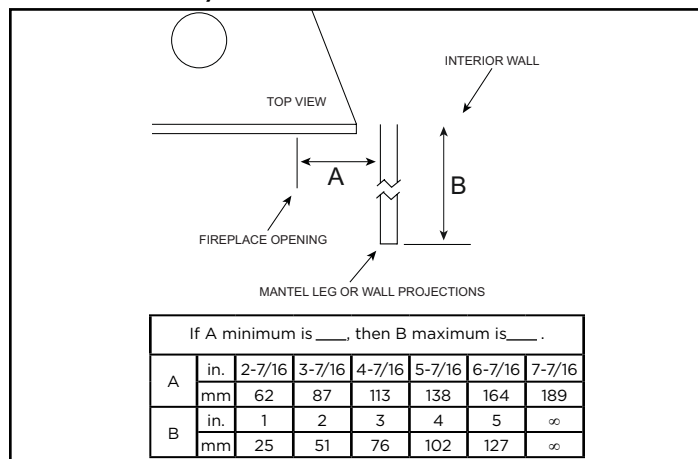
AREA	TO COMBUSTIBLES (in inches)
CLEARANCE TO CEILING	25
NON-COMBUSTIBLE FLOOR	0
COMBUSTIBLE FLOORING	0
BEHIND APPLIANCE	1/2
SIDES OF APPLIANCE	1/2




## CLEARANCES TO COMBUSTIBLES



## MANTEL PROJECTIONS



PRODUCT LISTING CODES	
US	ANSI Z21.50b-2009
CAN	CSA 2.22a-2009
 US LISTED	UL307B

Product information provided is not complete and is subject to change without notice. Product installation must adhere strictly to instructions accompanying product to avoid risk of fire and potential injury.

Additional information can be found online at [www.heatnglo.com](http://www.heatnglo.com)