

The image shows a close-up of a Heatilator fireplace. The fireplace is set into a wall made of light-colored, irregularly shaped stones. Above the fireplace is a dark wooden mantel with a decorative brass-colored ornament on the left. To the left of the fireplace, on a light-colored stone hearth, sits a dark brown ceramic vase. The fireplace itself has a dark metal frame with a curved top and bottom. The top and bottom of the frame feature a series of small, square, mesh-covered vents. The interior of the fireplace is visible through a large glass opening, showing a fire burning on a bed of logs. The overall scene is warm and inviting.

heatilator®
The first name in fireplaces

Caliber Series

direct vent gas fireplaces



traditional style, proven value

The Caliber Series delivers bold fires and impressive heating power with multiple placement options. The Caliber comes standard with a deep firebox, black metal refractory and efficient performance. The Caliber nXt upgrades the experience with a textured fiber interior, greater heat output, a standard fan to evenly distribute the heat and the RC300 remote control.

Create your unique look by pairing designer front and finish options, and define your space with traditional style, proven value and a beautiful roaring fire.

Caliber Features

- 36" or 42" viewing area
- Four fronts with two finishing options for a unique look
- Standard black metal refractory

Caliber nXt Features

- 36" or 42" viewing area
- Four fronts with two finishing options for a unique look
- Upgraded fiber refractory
- Standard RC300 remote
- Standard fan kit

IntelliFire™ Plus Ignition System

The IntelliFire™ Plus Ignition System (IPI Plus) is an advanced intermittent pilot ignition system with memory settings and a programmable wireless control. IPI Plus constantly monitors ignition, ensures safe functioning and conserves up to \$10/month in energy costs. To learn more, visit heatilator.com.

Direct Vent Technology

Direct Vent fireplaces remove 100% of combustion exhaust and odors outside of the home. These sealed fireplaces provide optimal heat, conserve energy and ensure clean, safe indoor air quality. To learn more, visit heatilator.com.

Cover: Caliber nXt shown with Contour front in bronze, standard traditional refractory and custom shelf mantel

Above: Caliber shown with Jamestown front in bronze, optional traditional refractory and custom surround and granite

Options

| | FRONT OPTIONS | INTERIOR OPTIONS | REMOTE OPTIONS | ADDITIONAL OPTIONS |
|--------------------|---------------|------------------|------------------------------------|-----------------------|
| Caliber | Simon | Metal (standard) | IntelliFire Plus RC 100 | Fan Kit |
| | Craftsman | Traditional | IntelliFire Plus RC 200 | Heat Zone Kit |
| | Jamestown | | IntelliFire Plus RC 300 | Gas Conversion Kits |
| | Contour | | | Mantels and Surrounds |
| Caliber nXt | Simon | Traditional | IntelliFire Plus RC 100 | Fan Kit (standard) |
| | Craftsman | Herringbone | IntelliFire Plus RC 200 | Heat Zone Kit |
| | Jamestown | | IntelliFire Plus RC 300 (standard) | Gas Conversion Kits |
| | Contour | | | Mantels and Surrounds |

Fronts & Doors



Simon (available in black only)



Craftsman



Jamestown



Contour

Refractory Styles



Black Metal Refractory
(standard on Caliber)



Traditional Refractory



Herringbone Refractory

Front Finishes



Black



Bronze

Controls



IntelliFire Plus RC100

Designed exclusively for Heatilator fireplaces with the IntelliFire ignition system.



IntelliFire Plus RC200 Enjoy easy, wireless control. The RC200 can also be docked on the wall to mimic a thermostat, or used as a remote.



IntelliFire Plus RC300 Control your comfort. The RC300 comes standard on the Caliber nXt. A large digital display provides simple navigation and easy operation, and can be docked on the wall or used as a remote.

For a complete list of control options, see your Heatilator dealer.

Additional Options Not Pictured

- Fan Kit
- Heat Zone Kit
- Gas Conversion Kits
- Mantels and Surrounds

Venting

- Direct Vent: DVP pipe & SLP pipe

U.S. Efficiencies

Steady State - Since most homeowners use their fireplaces for an extended time while they are in the room, Steady State measures how efficiently your fireplace converts fuel to heat once it is warmed up and running in a "steady state".

AFUE - AFUE rating is more typically used with appliances, like your furnace, that continually cycle on and off to maintain a constant temperature.

Canada Efficiencies

EnerGuide (CSA P.4.1-02) - EnerGuide is a rating used in Canada to measure annual fireplace efficiency.

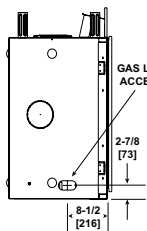
| Rating | CD4236IR/ILR-D | CD4842IR/ILR-D | CNXT4236IT/H-D | CNXT4842IT/H-D |
|--------------|----------------|----------------|----------------|----------------|
| Steady State | 81% (NG) | 83% (NG) | 78% (NG) | 76% (NG) |
| | 81% (LP) | 83% (LP) | 78% (LP) | 76% (LP) |
| AFUE | 60% (NG) | 63% (NG) | 65% (NG) | 67% (NG) |
| | 63% (LP) | 67% (LP) | 65% (LP) | 71% (LP) |

| Rating | CD4236IR/ILR-D | CD4842IR/ILR-D | CNXT4236IT/H-D | CNXT4842IT/H-D |
|--------------------------|----------------|----------------|----------------|----------------|
| EnerGuide (CSA P.4.1-02) | 64% (NG) | 67% (NG) | 68% (NG) | 68% (NG) |
| | 67% (LP) | 70% (LP) | 67% (LP) | 71% (LP) |

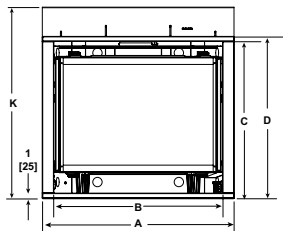
Technical Specifications

| MODEL | FRONT WIDTH | | BACK WIDTH | | HEIGHT | | DEPTH | | VIEWING AREA | BTU/HR INPUT |
|---------------------------|-----------------|-----------------|--------------------|-----------------|---------------------|---------------------|----------------|----------------|-----------------------------------|------------------------------------|
| | UNIT | FRAMING | UNIT | FRAMING | UNIT | FRAMING | UNIT | FRAMING | | |
| CD4236IR-D, CNXT4236-D | 41" (1041mm) | 42" (1067mm) | 28-1/2" (724mm) | 42" (1067mm) | 39-7/8" (1013mm) | 40-1/8" (1019mm) | 21" (533mm) | 22" (559mm) | 35" x 24-1/8" (889mm x 613mm) | 16,000 - 30,000 23,000 - 40,000 |
| CD4842IR-D, CNXT4842-D | 48" (1219mm) | 49" (1245mm) | 35-1/2" (901mm) | 49" (1245mm) | 41-7/8" (1064mm) | 42-1/8" (1019mm) | 21" (533mm) | 22" (559mm) | 42" x 26-1/8" (1067mm x 664mm) | 18,000 - 35,000 25,000 - 45,000 |

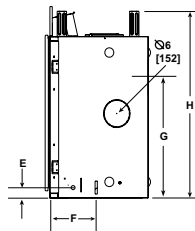
Left Side



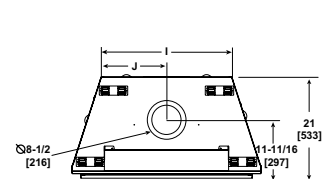
Front



Right Side



Top

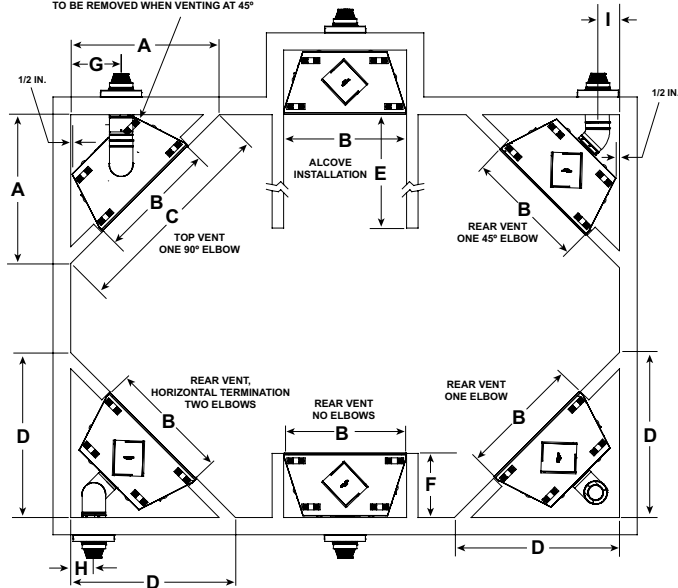


| MODEL | A | B | C | D | E | F | G | H | I | J | K |
|---------------------------|-----------------|---------------------|--------------------|--------------------|------------------|---------------------|--------------------|---------------------|--------------------|--------------------|---------------------|
| CD4236IR-D, CNXT4236-D | 41" (1041mm) | 36-1/8" (918mm) | 33-1/2" (851mm) | 34-5/8" (879mm) | 2-1/4" (57mm) | 9-11/16" (246mm) | 26-7/8" (683mm) | 39-7/8" (1013mm) | 28-1/2" (724mm) | 14-1/4" (362mm) | 40-7/8" (1038mm) |
| CD4842IR-D, CNXT4842-D | 48" (1219mm) | 43-1/8" (1096mm) | 35-1/2" (902mm) | 36-5/8" (930mm) | 2-3/8" (60mm) | 9-15/16" (252mm) | 28-7/8" (734mm) | 41-7/8" (1064mm) | 35-1/2" (901mm) | 17-3/4" (451mm) | 42-7/8" (1089mm) |

Clearances

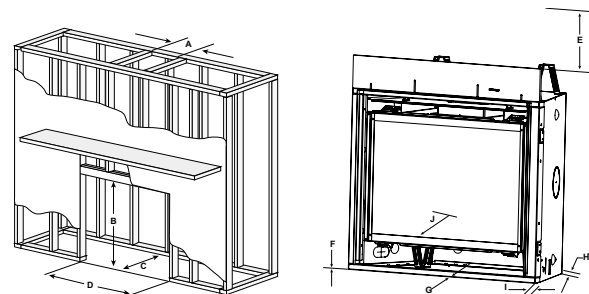
| MODEL | A | B | C | D | E | F | G | H | I |
|---------------------------|---------------------|-----------------|-----------------|---------------------|---------------------|----------------|--------------------|-----------------|--------------------|
| CD4236IR-D, CNXT4236-D | 51" (1295mm) | 42" (1067mm) | 72" (1829mm) | 56-5/8" (1438mm) | See Inst. Manual | 22" (559mm) | 17-3/4" (451mm) | 8" (203mm) | 6-3/4" (171mm) |
| CD4842IR-D, CNXT4842-D | 55-7/8" (1419mm) | 49" (1245mm) | 79" (2007mm) | 61-1/2" (1562mm) | See Inst. Manual | 22" (559mm) | 19-3/4" (502mm) | 10" (1064mm) | 10-1/8" (257mm) |

NOTE: THE REAR STANDOFF MAY NEED TO BE REMOVED WHEN VENTING AT 45°



Framing

| MODEL | A ROUGH OPENING (WIDTH) | B ROUGH OPENING (HEIGHT) | C** ROUGH OPENING (DEPTH) | D ROUGH OPENING (WIDTH) | E CLEARANCE TO CEILING |
|---------------------------|-------------------------------|--------------------------------|---------------------------------|-------------------------------|------------------------------|
| CD4236IR-D, CNXT4236-D | 10" (254mm) | 40-1/8" (1019mm) | 22" (559mm) | 42" (1067mm) | 25" (635mm) |
| CD4842IR-D, CNXT4842-D | 10" (254mm) | 42-1/8" (1019mm) | 22" (559mm) | 49" (1245mm) | 25" (635mm) |



| MODEL | F COMBUSTIBLE TO FLOOR | G COMBUSTIBLE FLOORING | H BEHIND APPLIANCE | I SIDES OF AP- PLIANCE | J FRONT OF AP- PLIANCE |
|---------------------------|------------------------------|------------------------------|--------------------------|------------------------------|------------------------------|
| CD4236IR-D, CNXT4236-D | 0" (0mm) | 0" (0mm) | 1/2" (13mm) | 1/2" (13mm) | 36" (914mm) |
| CD4842IR-D, CNXT4842-D | 0" (0mm) | 0" (0mm) | 1/2" (13mm) | 1/2" (13mm) | 36" (914mm) |

The rough framing dimensions shown represent the distance from stud to stud only and do not take into consideration the addition of drywall. Please refer to installation instructions for complete specifications and drawings when installing this product. Go to heatilator.com to download.

Available From

heatilator
The first name in fireplaces

800-927-6841 | heatilator.com

[facebook.com/Heatilator](https://www.facebook.com/Heatilator)

twitter.com/Heatilator

[youtube.com/HeatilatorFireplaces](https://www.youtube.com/HeatilatorFireplaces)

HTL-1096U-1015

Limited Lifetime Warranty¹

The strongest in the industry, Heatilator provides a limited lifetime warranty on gas-burning products of the most important aspects: firebox and heat exchanger.

¹ For full warranty details go to heatilator.com.

The information provided in this literature is for planning purposes only and subject to change. Please consult the installation manual for actual installation. Actual product appearance may differ from product images.

Fireplace glass and other surfaces get extremely HOT and can cause severe burns if touched. Do not remove the protective safety screen from the front of the glass. Keep a safe distance away. To learn more visit www.heatilator.com/fireplacesafety.

