

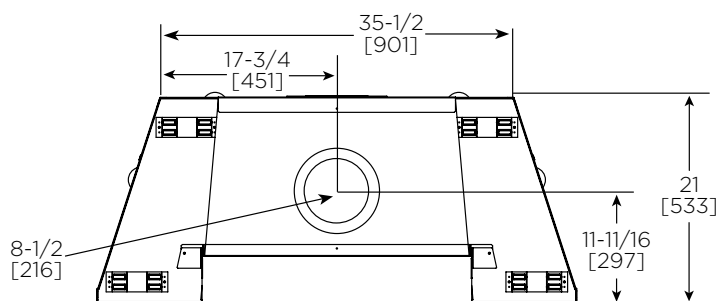
HEAT&GLO™

No one builds a better fire

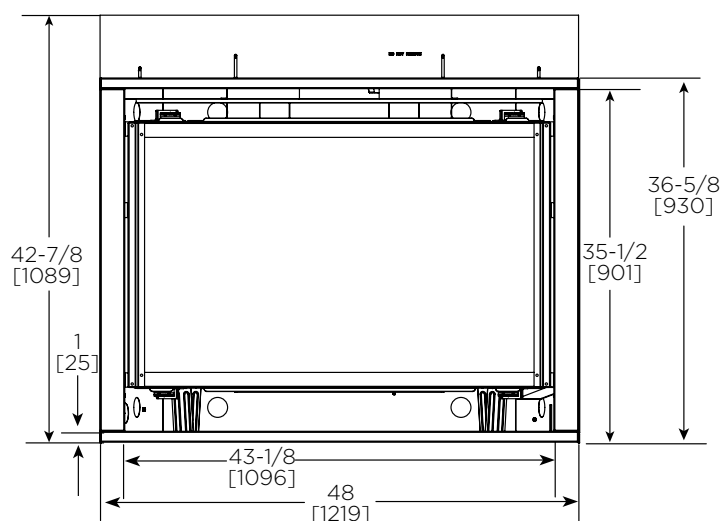
Please consult the manufacturer's installation manual for all details and requirements before making a final design layout decision.

8000CL**Direct Vent Gas Fireplace**

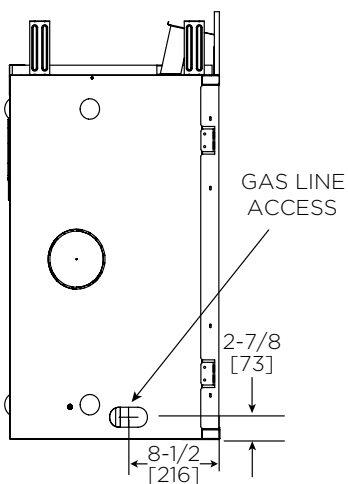
MODEL	FRONT WIDTH		BACK WIDTH		HEIGHT		DEPTH		VIEWING AREA
8000CL	Actual	Framing	Actual	Framing	Actual	Framing	Actual	Framing	42 x 26-1/8
	48	49	35-1/2	49	41-7/8	42-1/8	21	22	



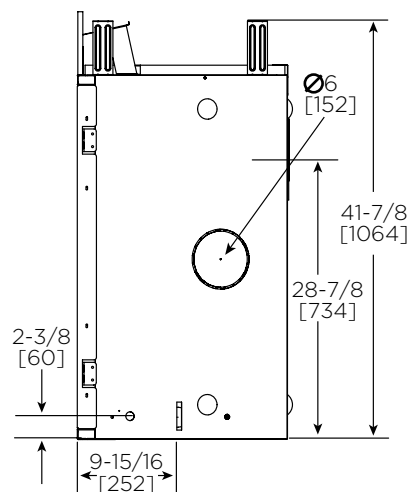
TOP VIEW



FRONT VIEW



LEFT SIDE

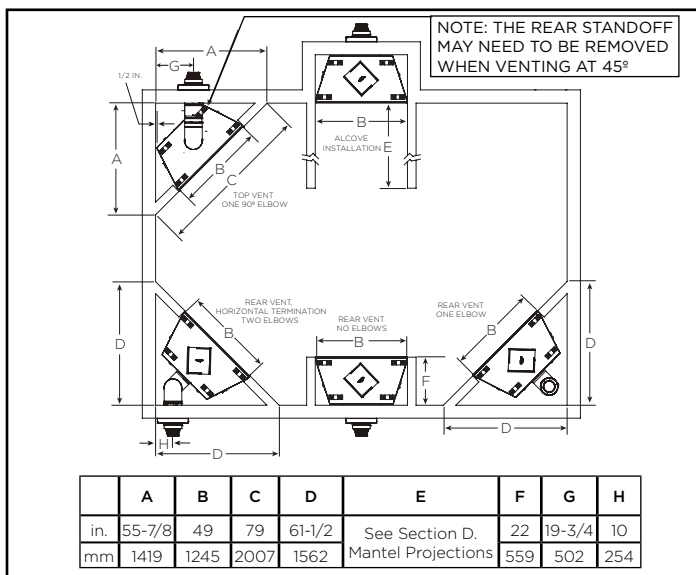


RIGHT SIDE

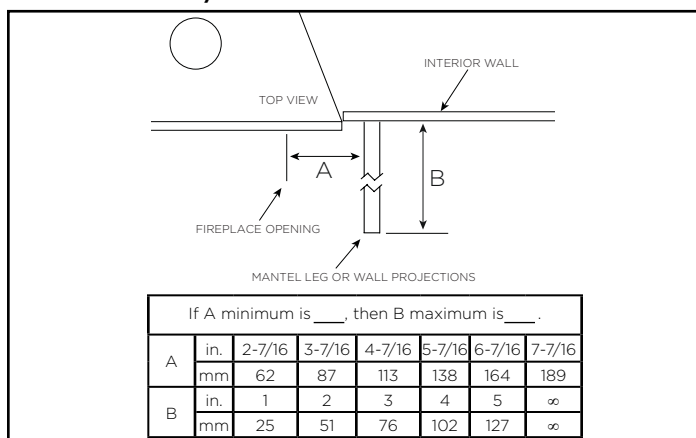
MINIMUM FIREPLACE CLEARANCES

AREA	TO COMBUSTIBLES (in inches)
CLEARANCE TO CEILING	25
NON-COMBUSTIBLE FLOOR	0
COMBUSTIBLE FLOORING	0
BEHIND APPLIANCE	1/2
SIDES OF APPLIANCE	1/2

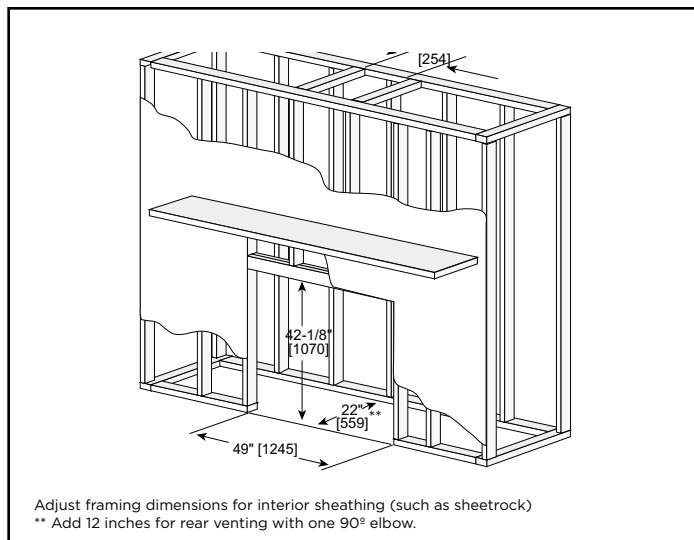
FRAMING DIMENSIONS



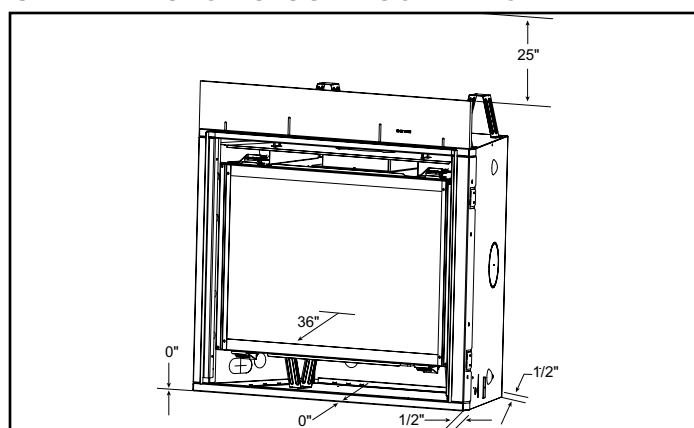
MANTEL LEG/WALL PROJECTIONS



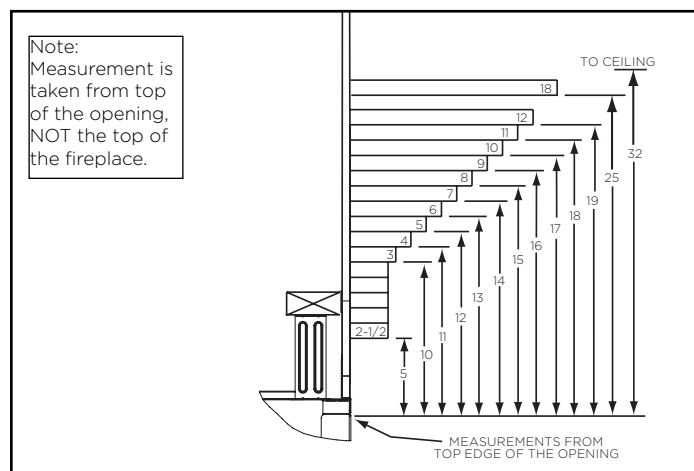
FRAMING DIMENSIONS



CLEARANCES TO COMBUSTIBLES



MANTEL PROJECTIONS



PRODUCT LISTING CODES

US	ANSI Z21.88b-2008
CAN	CSA 2.33a-2008
US LISTED	UL307B

Product information provided is not complete and is subject to change without notice. Product installation must adhere strictly to instructions accompanying product to avoid risk of fire and potential injury.

Additional information can be found online at www.heatnglo.com